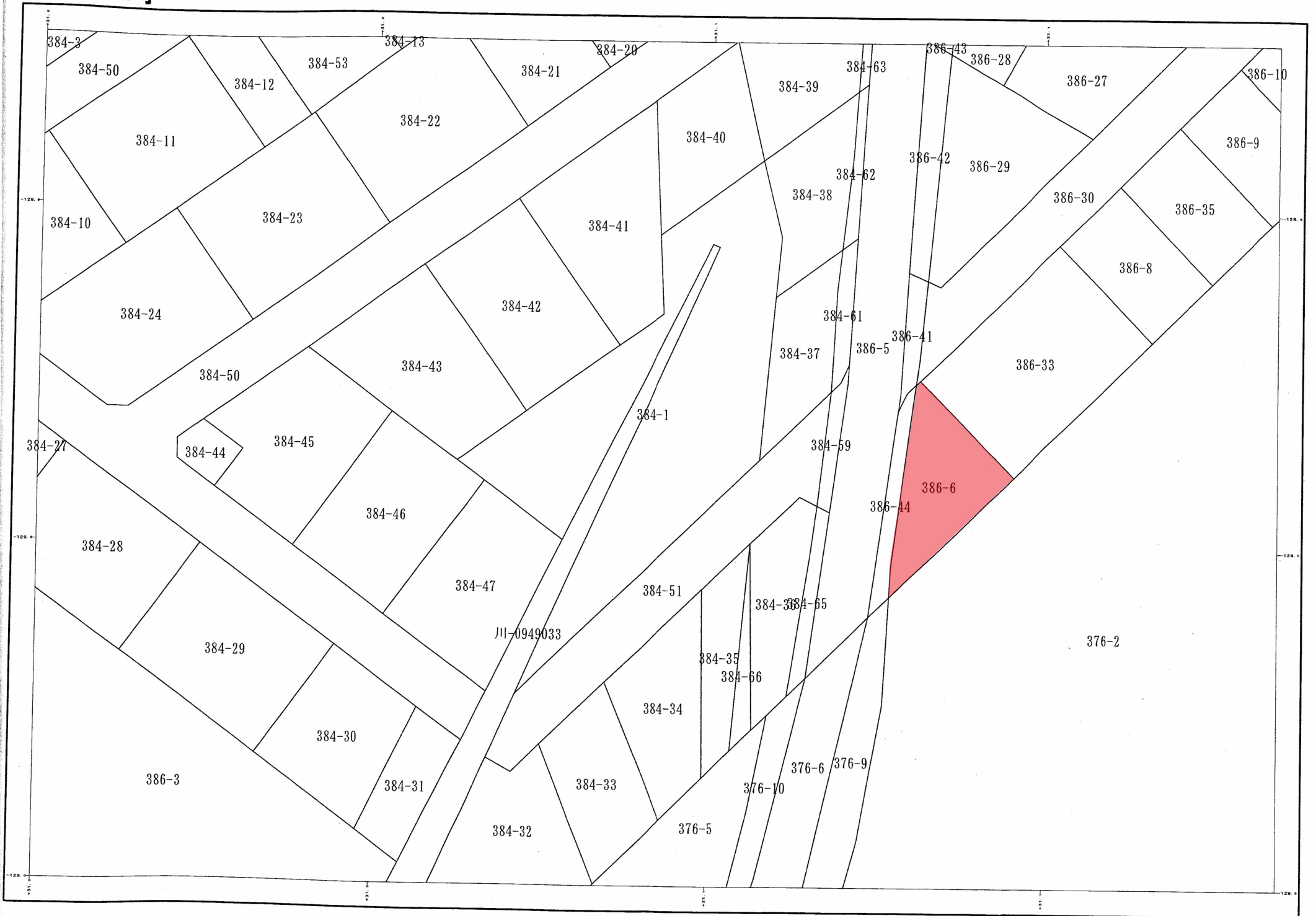
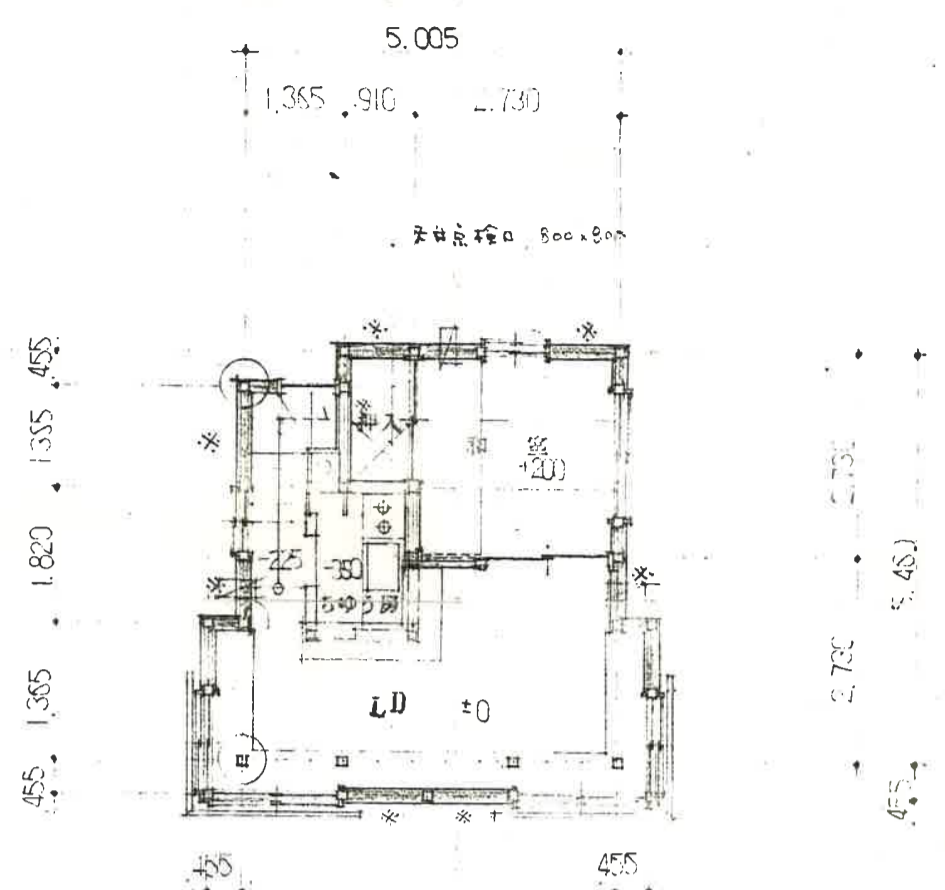
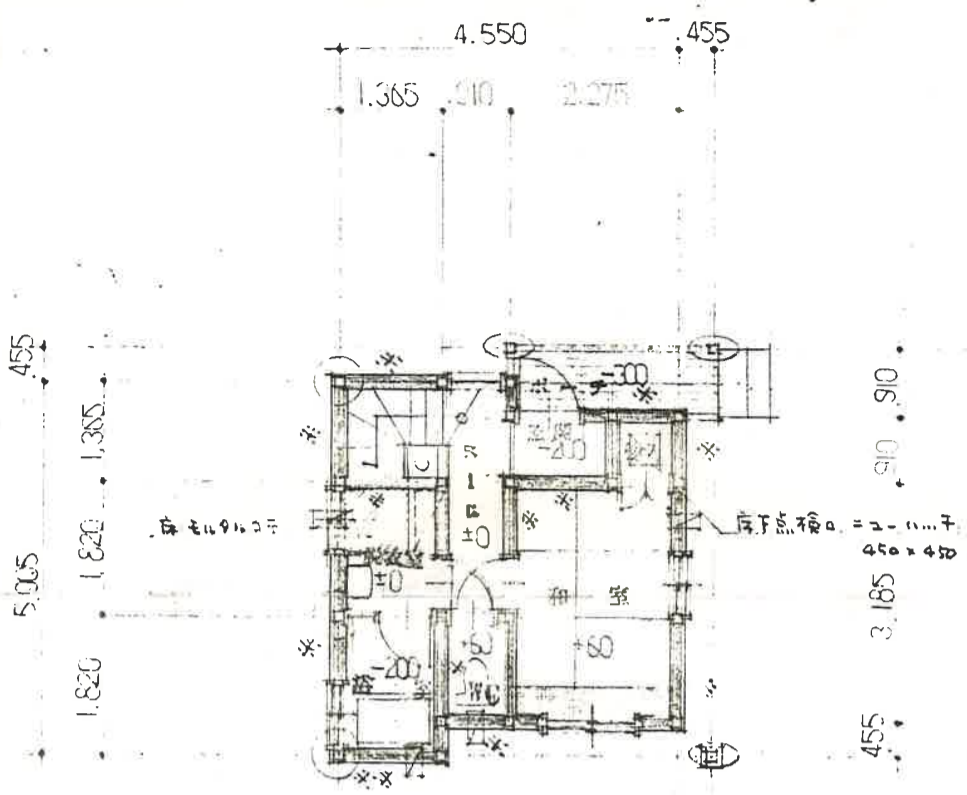


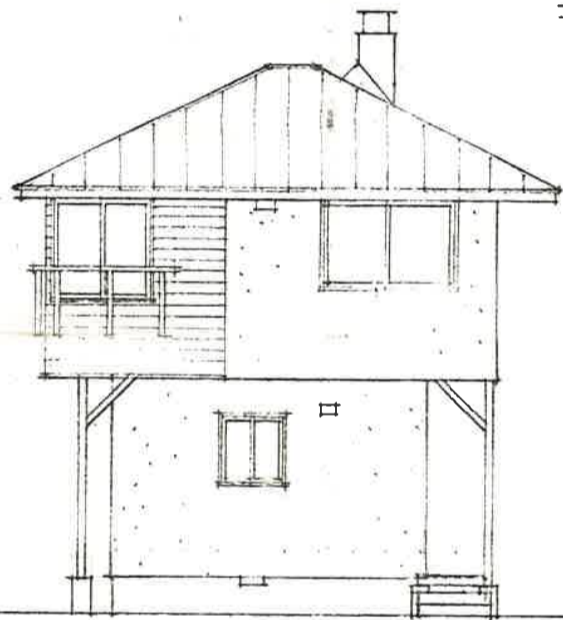
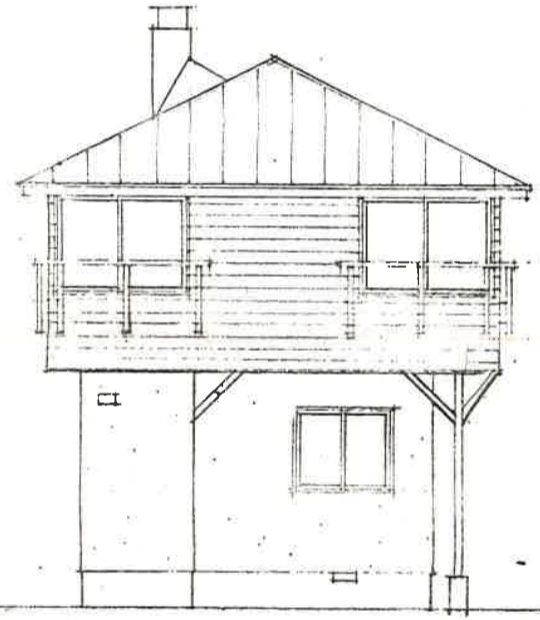
ニセコ町





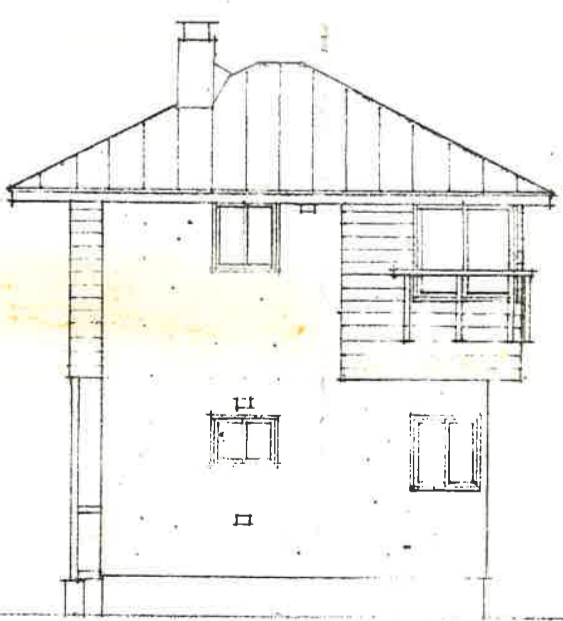
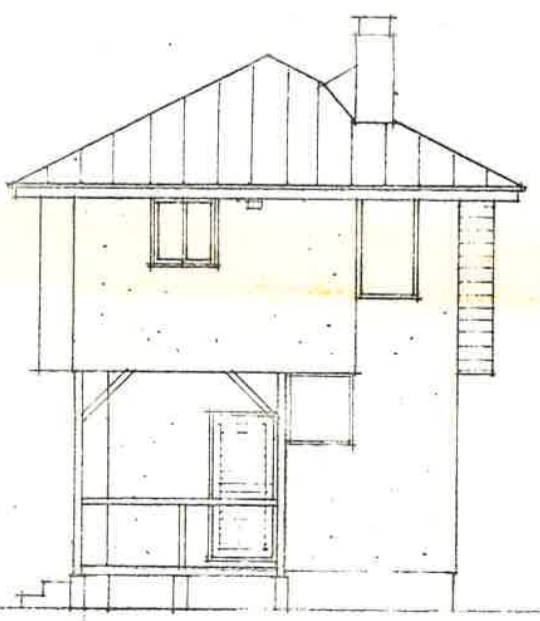
1 階平面図
 1F 20.288
 + 2F 26.706
 計 46.994

2 階平面図
 ① 窓 125x105
 * 柱 105x36
 ② 柱 120x120
 ③ 柱 120x120
 ④ 柱 120x120
 ⑤ 柱 120x120
 ⑥ 柱 120x120
 ⑦ 柱 120x120
 ⑧ 柱 120x120
 ⑨ 柱 120x120
 ⑩ 柱 120x120
 ⑪ 柱 120x120
 ⑫ 柱 120x120
 ⑬ 柱 120x120
 ⑭ 柱 120x120
 ⑮ 柱 120x120
 ⑯ 柱 120x120
 ⑰ 柱 120x120
 ⑱ 柱 120x120
 ⑲ 柱 120x120
 ⑳ 柱 120x120
 ㉑ 柱 120x120
 ㉒ 柱 120x120
 ㉓ 柱 120x120
 ㉔ 柱 120x120
 ㉕ 柱 120x120
 ㉖ 柱 120x120
 ㉗ 柱 120x120
 ㉘ 柱 120x120
 ㉙ 柱 120x120
 ㉚ 柱 120x120
 ㉛ 柱 120x120
 ㉜ 柱 120x120
 ㉝ 柱 120x120
 ㉞ 柱 120x120
 ㉟ 柱 120x120
 ㊱ 柱 120x120
 ㊲ 柱 120x120
 ㊳ 柱 120x120
 ㊴ 柱 120x120
 ㊵ 柱 120x120
 ㊶ 柱 120x120
 ㊷ 柱 120x120
 ㊸ 柱 120x120
 ㊹ 柱 120x120
 ㊺ 柱 120x120
 ㊻ 柱 120x120
 ㊼ 柱 120x120
 ㊽ 柱 120x120
 ㊾ 柱 120x120
 ㊿ 柱 120x120



正面

右側面



左側面

背面